

Carle Health in the Community

A Powerful Impact

As the area's trusted healthcare provider, serving and improving the health of our community members is central to everything we do at Carle Health. Our commitment to the community reflects our mission to serve by delivering world-class care, conducting impactful medical research, and training the providers and caregivers of tomorrow.

As part of our dedication to improving the health of the people we serve, we're constantly collaborating with other providers, research and teaching organizations, community organizations, and policymakers to expand access to programs and resources that address issues that impact the health and well-being of our community members.

DEFINING COMMUNITY BENEFIT

Community benefit has many components, including charitable activities of the not-for-profit Carle Foundation Hospital, Carle Physician Group and other Carle Health entities.



Charity Care

Care that's provided at no cost to our patients, regardless of their ability to pay.



Donations

Charitable donations and in-kind gifts to community partners.



Community Health

Programming support within the community.



Medicare/Medicaid Unpaid Costs

Unreimbursed care provided to patients covered by Medicare and Medicaid.



Research

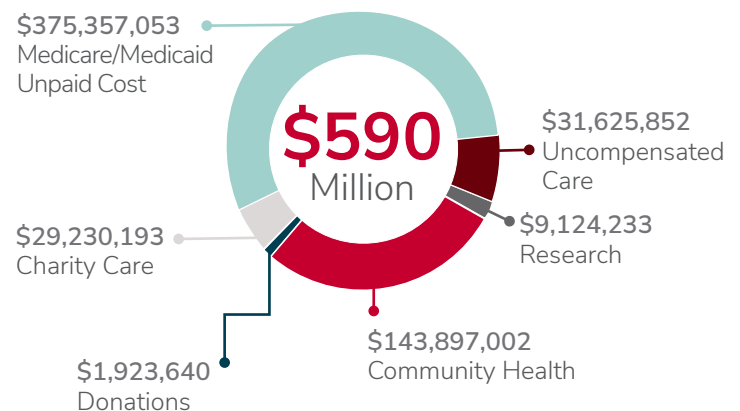
Costs associated with our clinical research program.



Uncompensated Care

Care for which Carle Health received no payment.

SERVICES, DONATIONS AND SUPPORT TO OUR COMMUNITIES IN 2023



\$29+
million

in free or discounted
care to our patients.

19,463+

patients who received
free or discounted care.

100+

donations to community
organizations.

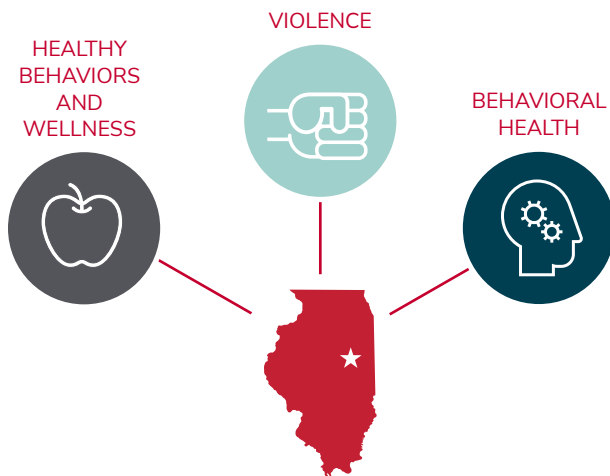
OUR COMMITMENT IN ACTION

Through our Community Health Initiatives, we're working with area partners to address the root causes of health concerns facing the people we serve. Our Healthy Food Boxes Program contributed over 1,100 nutritious food boxes to families in need in 2023 alone. In 2023, Healthy Beginnings completed 3,960 visits and 4,144 nurse-to-patient contact hours. The Mobile Market and Mobile Health Clinic travel five to six days a week, offering locally grown produce, full-service medical care and access to social service supports. The Mobile Health Clinic also works with local schools to offer large events providing physicals and immunizations, keeping students compliant with state requirements. In 2023, the Mobile Health Clinic operated 247 days and offered seven large school events, for a total of 2,578 patients. Additionally, the Mobile Health Clinic began offering services to McLean County, including 29 days of operation, three events and a total patient count of 268. Through continued partnerships, Mobile Health is increasing access to care and offering more services. Regardless of life or financial circumstances, we help patients improve their health.



COMMUNITY BENEFIT FOCUS

Working with industry peers and partners, we continually evaluate the needs of the people and communities we serve. Using this information, we developed a comprehensive plan to not only guide our efforts, but to make the greatest difference in the health and wellness of our communities. The three key health issues most impacting our area are:



With the help of our partners, our community programs are advancing healthcare services for the under- and uninsured, addressing the addiction epidemic in our area, encouraging healthy habits, and supporting victims of domestic violence, sexual assault and child abuse.

Driven by our mission and vision, Carle Health is committed to going above and beyond to ensure patients and community members have access to the care and resources they need to meet their unique needs.

CHARITY CARE

As a dedicated community partner, Carle Health cares for people regardless of their ability to pay. We're committed to ensuring all our patients receive the care they need, while remaining responsible stewards of our resources. As healthcare evolves, regulations shift and reimbursements change, we must remain vigilant in fulfilling this mission.

2023

19,463

individuals who received free or discounted care.

\$29,230,193

charity care at cost.

\$591,157,973

annual community benefit.

For more information, or to view an online version of this community benefit report, please visit carle.org/impact or email PublicRelations@carle.com.

